



SprayAction  
spray park systems

kids' play area







**SprayAction**  
spray park systems

## **INDEX**

**3 - Welcome to SprayAction**

**4/16 - SprayBar**

**17/28 - Form**

**29/41 - Space**

**42/55 - Wonderland**

**56/ 65 - Sets**

**SPRAYBAR**

**FORM**

**SPACE**

**WONDERLAND**

**sprayset**





# SprayAction

spray park systems

## ***Sprayaction..***

***Spray Park System, Water game where the water play actions&fun begins, Welcome to sprayaction.***

## ***What is SprayAction?***

- Water entertaining and refreshing effect combined with thematic products will expand the imaginations of children and to enable them to have a good time while learning a new generation playground.***
- Children and their family will enjoy and discover spray toys and a new world of animation.***
- By the innovative inspiration of Sprayaction toys, children will spend their valuable time by playing&educating in all kind of amusement parks, hotel, park, school playgrounds and municipality parks with the rich visual alternatives.***

***Futuraform, provides developing new ideas, a new sense of fun to the a children's playground by own experienced team about theming and playgrounds. All of the product designs are based on the worldwide quality standards and norm that are secured the safety of our children.***

***For the Sprayaction toys, we pay more attention about the desing on which improves the children's imagination, they can do all sports activites and improve their imagination in a regular park area.***

***Original and innovative design concept, open to new ideas and has a flexible structure. Products are easy to assemble and do not need a long construction time.***

## ***Why Sprayaction?***

***Sprayaction, entertainment, sports, activities will add your life a continuous activity.***

***Children are always indispensable part of leisure and entertainment life.***

***In addition to making original products, with expert staff of Futuraform; all around the world we offer a unique service network and product supply.***



A vibrant, stylized illustration on a dark blue background. The scene features a central 'spray bar' with a yellow nozzle and a blue hose. A stream of blue liquid is being sprayed from the nozzle, splashing onto a red car with yellow stripes on its side. To the left, there are several tall, thin plants with green leaves and yellowish-brown flower-like structures. In the foreground, there are smaller plants, including one with a red base and a green leaf, and another with a green base and a blue stem. The overall style is whimsical and artistic, with bold colors and expressive brushstrokes.

# SPRAY BAR





# SPRAYBAR MINI SPRAY



*h: 50 cm*

MS007



*h: 50 cm*

MS008



*h: 50 cm*

MS009



*h: 50 cm*

MS012





SprayAction  
spray park systema

# SPRAYBAR MINI SPRAY



MS004



*h: 60 cm*

MS005

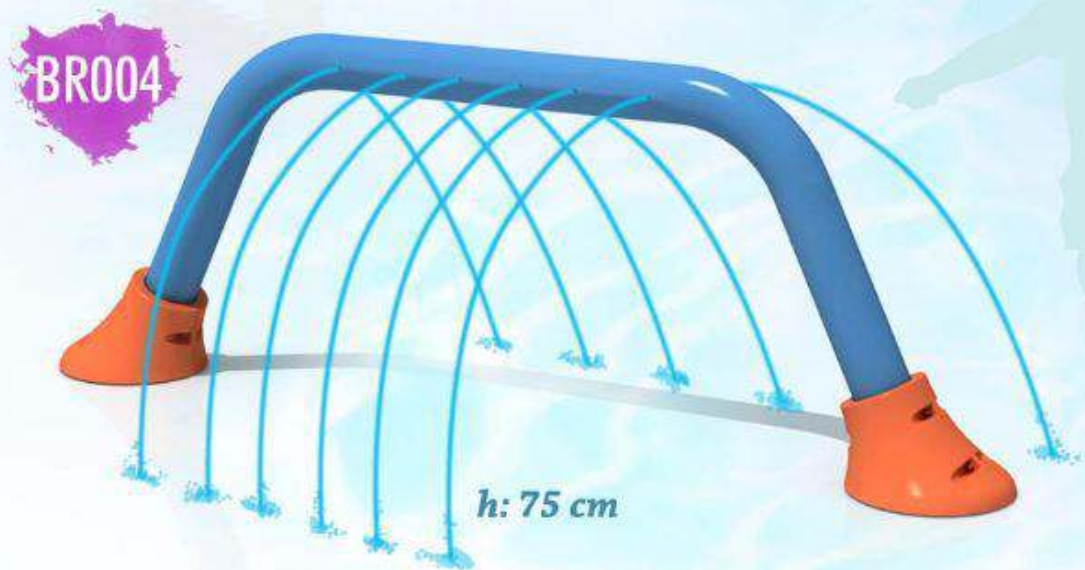


*h: 106 cm*

MS006



*h: 70 cm*







SprayAction  
spray park systems

# SPRAYBAR MIDI SPRAY

MD001



*h: 197 cm*

MD002



*h: 196 cm*





SprayAction  
spray park systems

# SPRAYBAR



PL004

*h: 236 cm*



PL005

*h: 294 cm*

PL006



*h: 240 cm*



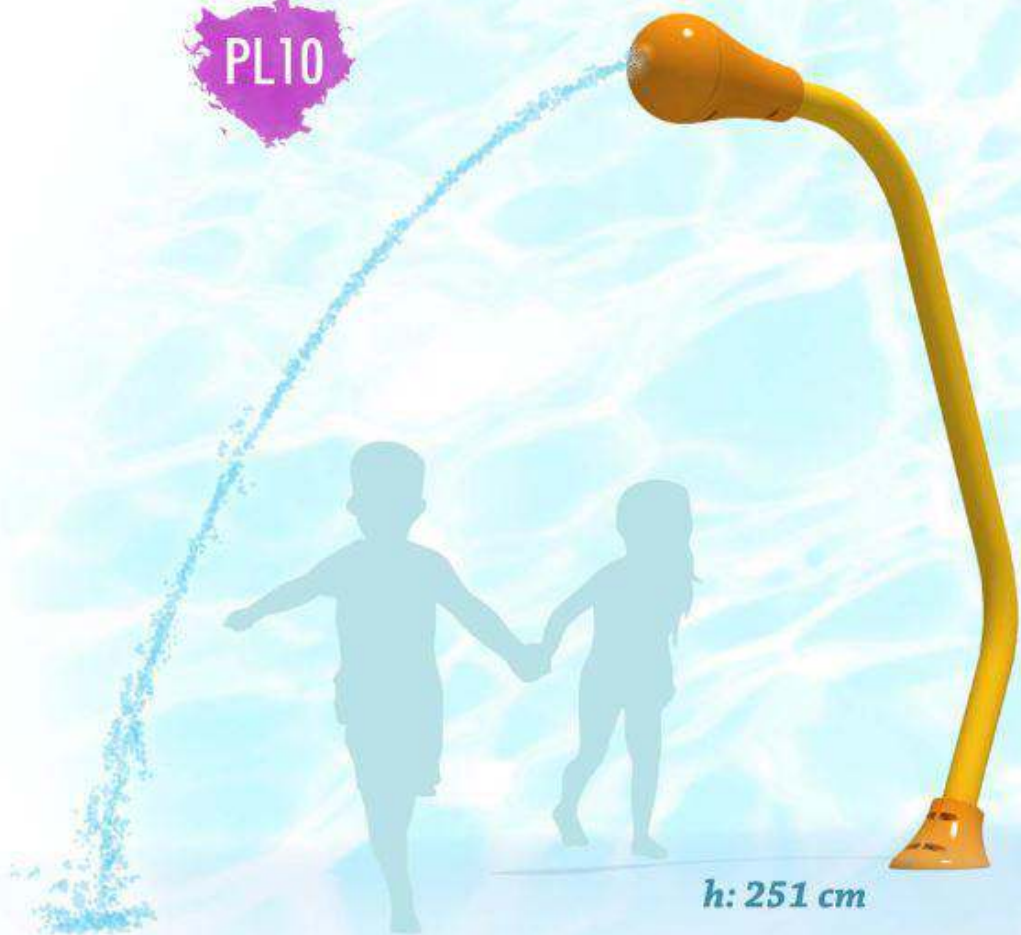


SprayAction  
spray park systems

# SPRAYBAR

10

PL10



*h: 251 cm*

PL11



*h: 230 cm*





PL007



*h: 246 cm*

PL008



*h: 246 cm*





SprayAction  
spray park systems

# SPRAYBAR

12







SprayAction  
spray park systems

# SPRAYBAR

BR001



BR001  
apple



h: 195 cm





SprayAction  
spray park systems

SPRAYBAR

14

ZN007



h: 386 cm





SprayAction  
spray park systems

SPRAYBAR

15

MB202



h: 145 cm





SprayAction  
spray park systems

# SPRAYBAR



MT001





FORM







# FORM

FR01A

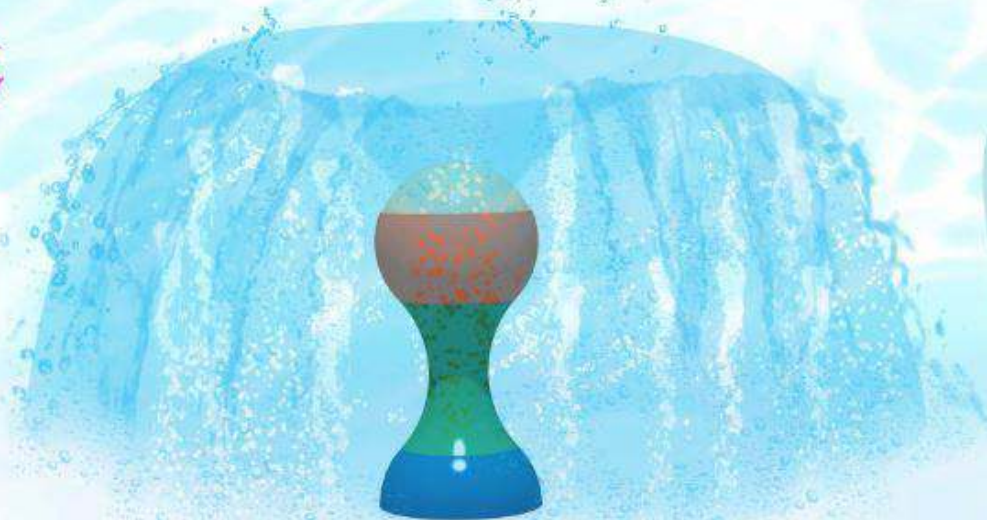


FR01B



*h: 110 cm*

FR01C







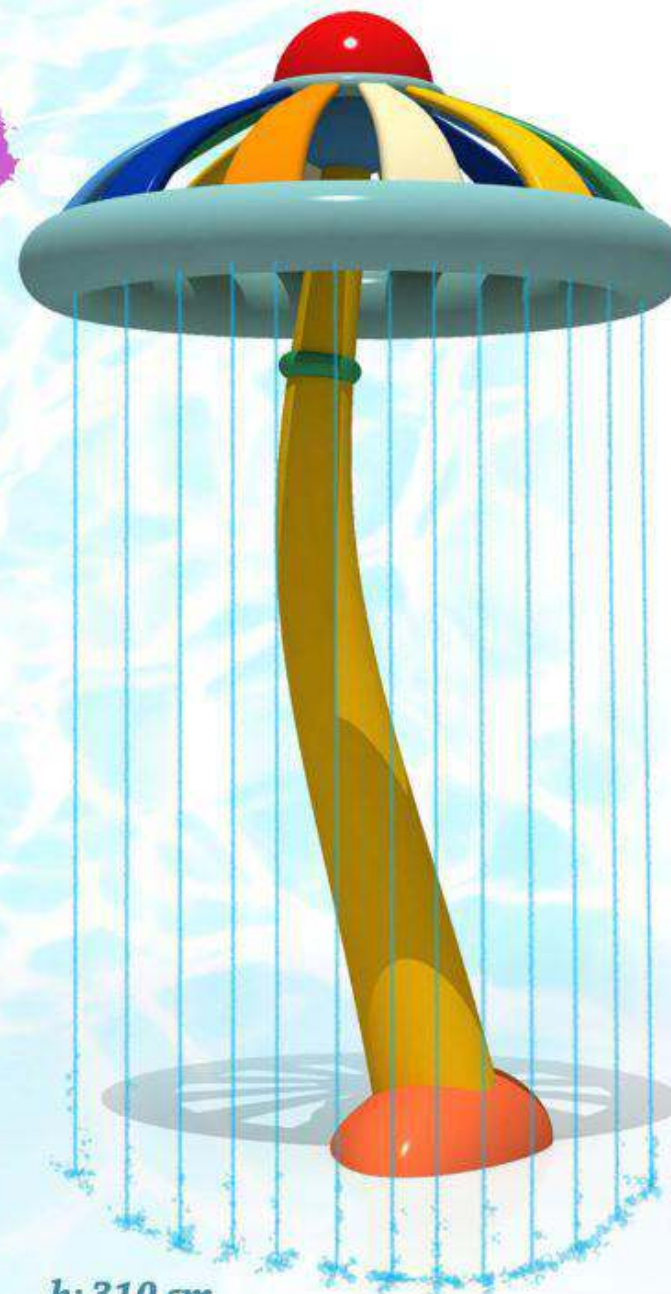
# FORM



FR02

*h: 130 cm*

FR04



*h: 310 cm*



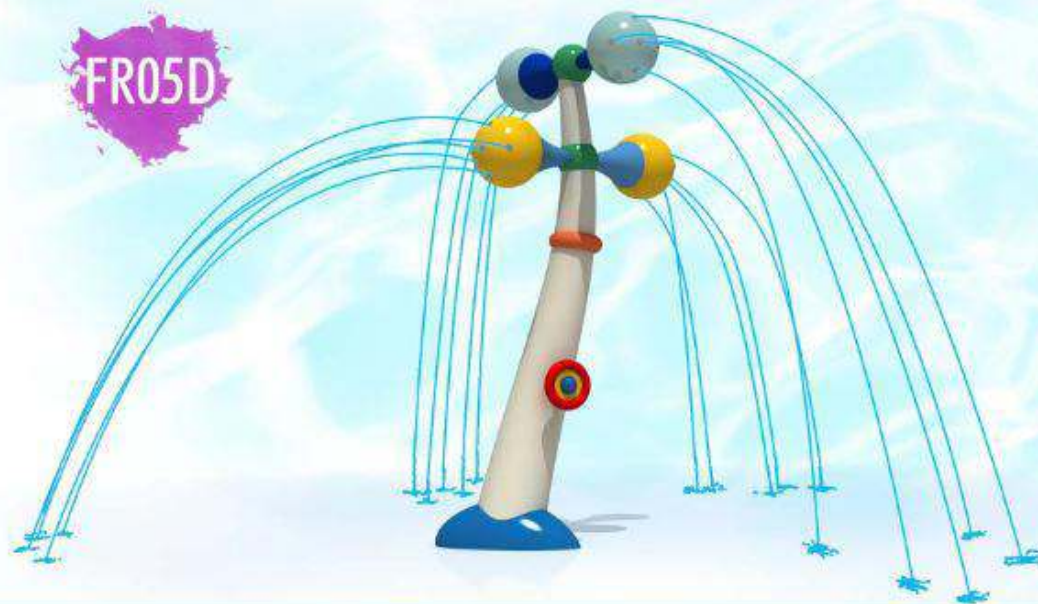
FR03

*h: 35 cm*





# FORM

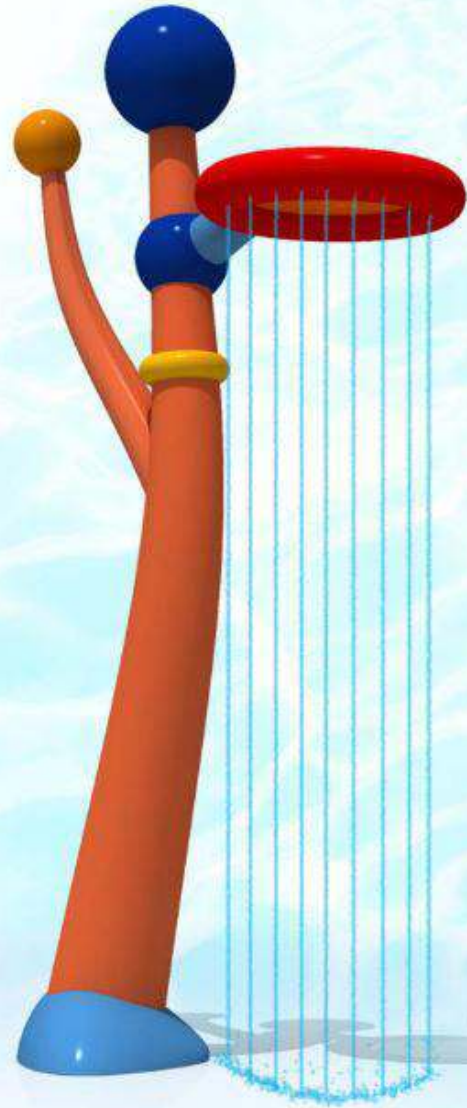






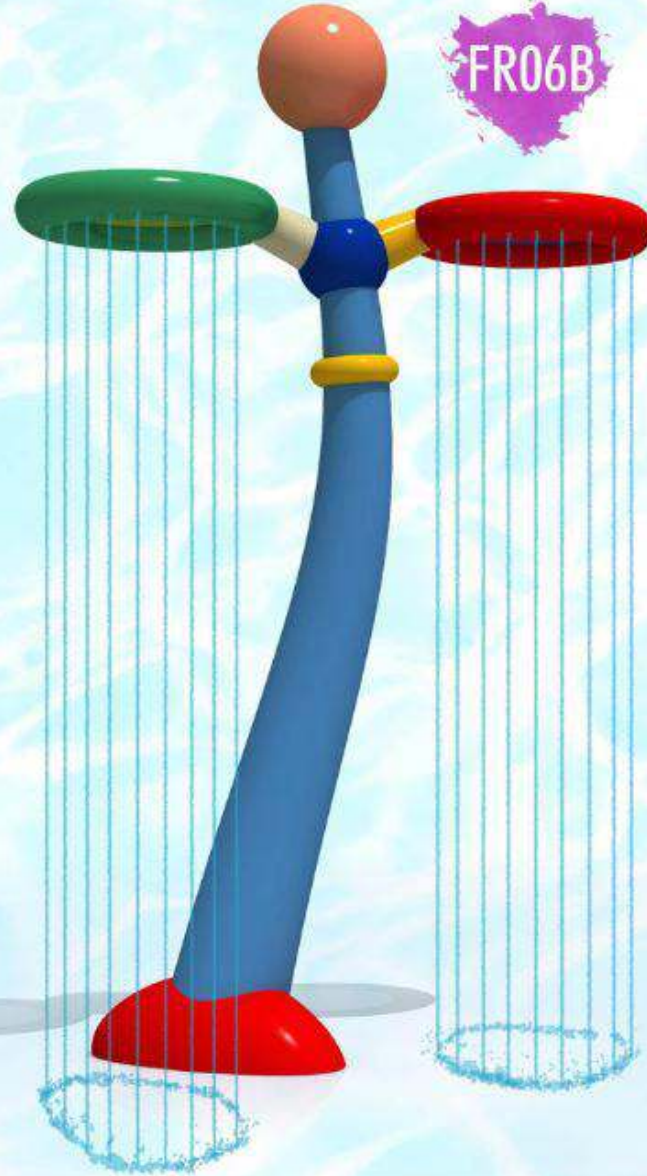
# FORM

FR06A



*h: 300 cm*

FR06B



FR06C



*h: 330 cm*







SprayAction  
spray park systems

# FORM

22



FR07



h: 395 cm





# FORM







SprayAction  
spray park systems

# FORM



FR10

*h: 215 cm*



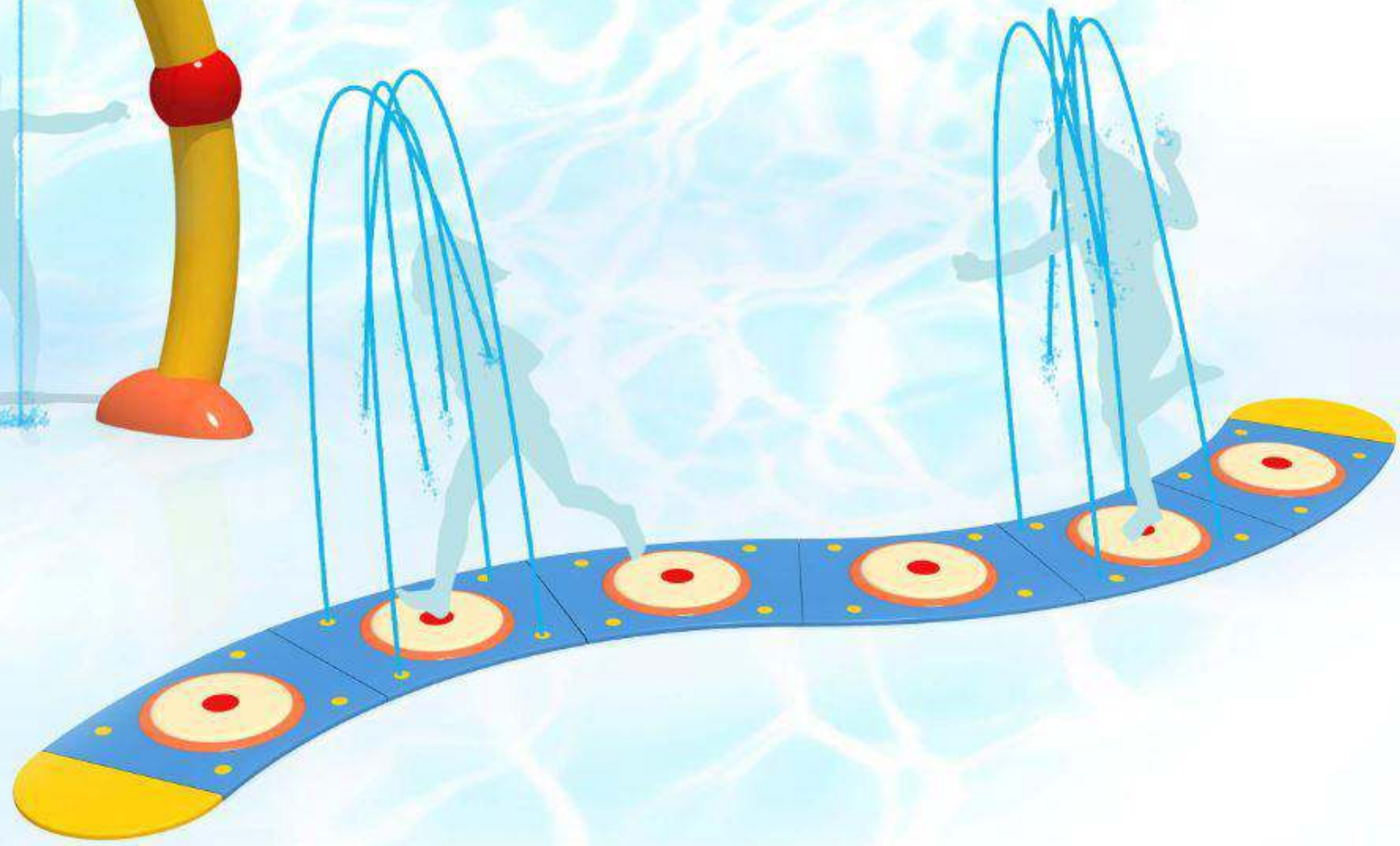


# FORM



FR11

FR12







# FORM

FR13A



FR13B







SprayAction  
spray park systems

# FORM

27

— Sample Sets —



50 m<sup>2</sup>



50 m<sup>2</sup>



100 m<sup>2</sup>





SprayAction  
spray park systems

# FORM

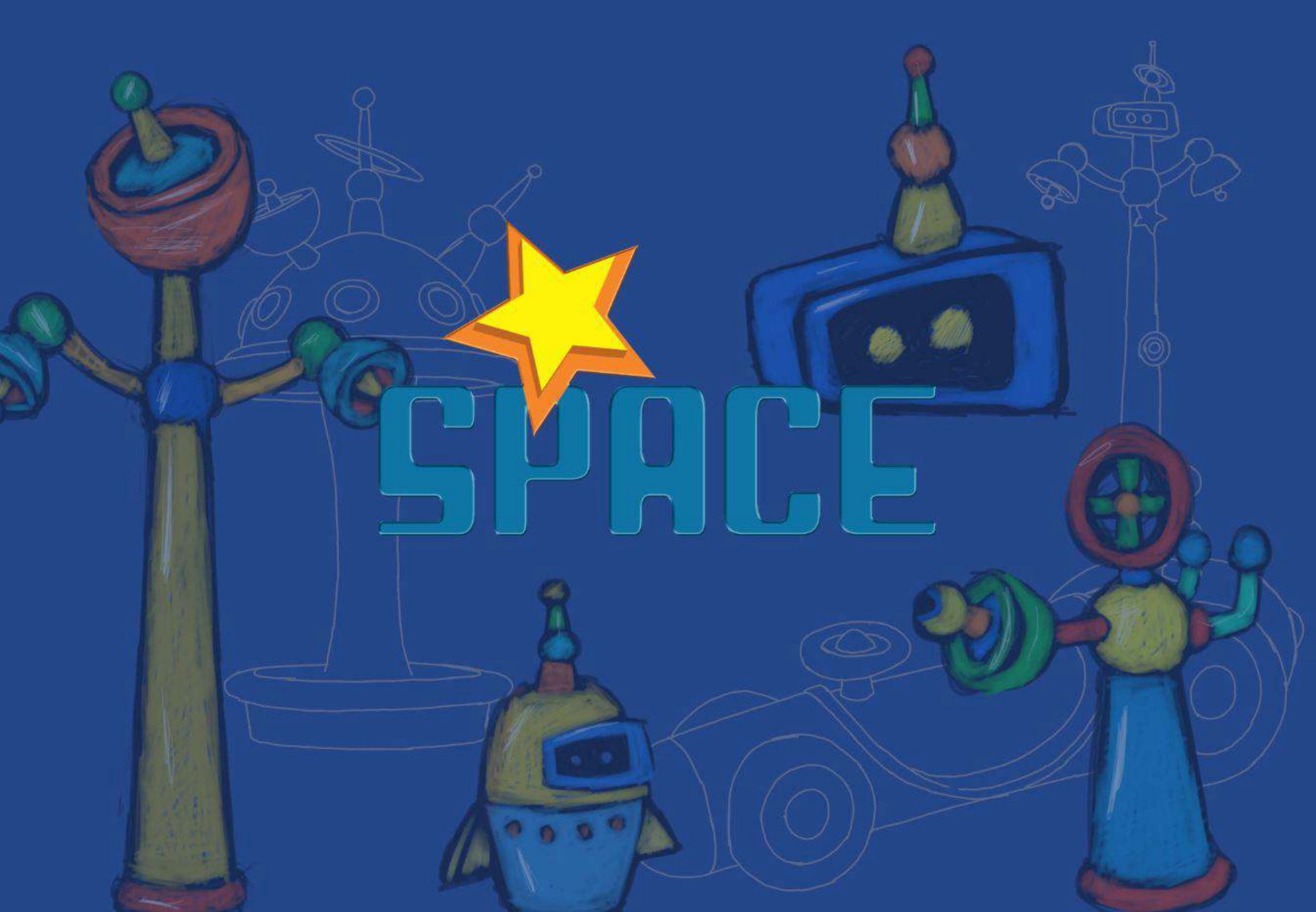
28



200 m<sup>2</sup>



SPACE







# SPACE

SP01A



*h: 115 cm*

SP02A



*h: 73 cm*

SP02B



*h: 50 cm*

SP01B



*h: 110 cm*

SP03A



*h: 35 cm*





# SPACE

SP04A



SP04B







SprayAction  
spray park systems

# SPACE



SP05A

SP05B

SP05C

*h: 330 cm*





# SPACE

SP05D



*h: 350 cm*

SP05E



*h: 315 cm*

SP06



*h: 330 cm*





SprayAction  
spray park systems

# SPACE

SP07



h: 406 cm





# SPACE



SP08



SP09





SprayAction  
spray park systems

# SPACE



*h: 260 cm*





SprayAction  
spray park systems

# SPACE



SP11

h: 1.60 cm



SP12





SprayAction  
spray park systems

# SPACE

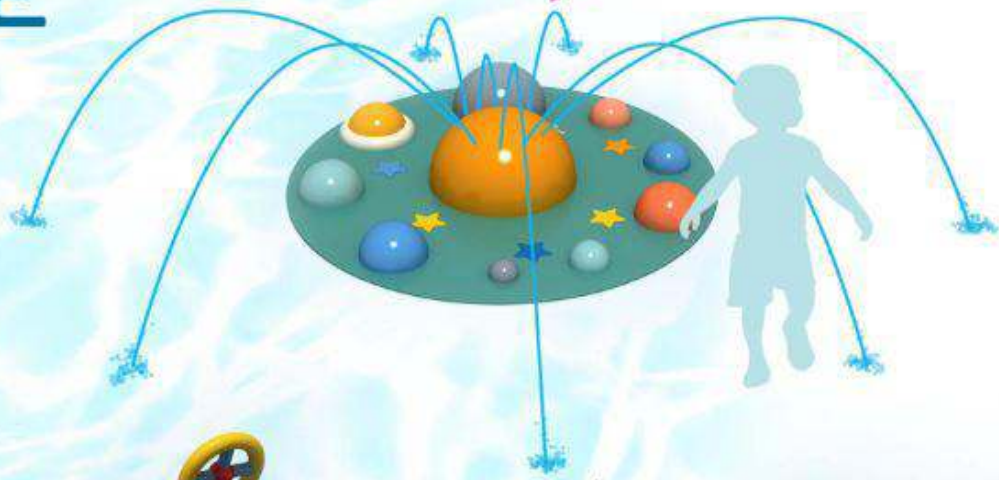
SP13A



*h: 1.60 cm*



SP014



SP13B



*h: 1.60 cm*





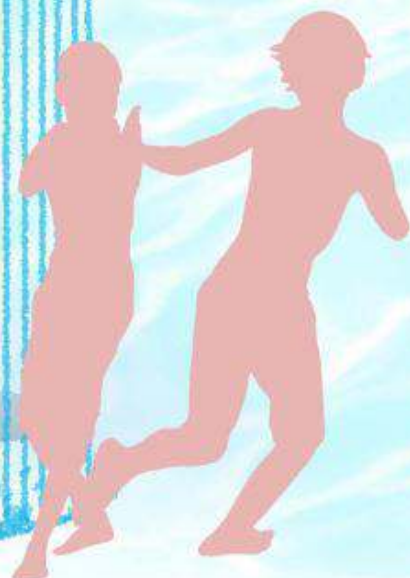
SprayAction  
spray park systems

# SPACE

39



SP15A



h: 260 cm



SP15B



h: 365 cm





SprayAction  
spray park systems

# SPACE



50 m<sup>2</sup>



50 m<sup>2</sup>



100 m<sup>2</sup>





SprayAction  
spray park systems

# SPACE



200 m<sup>2</sup>



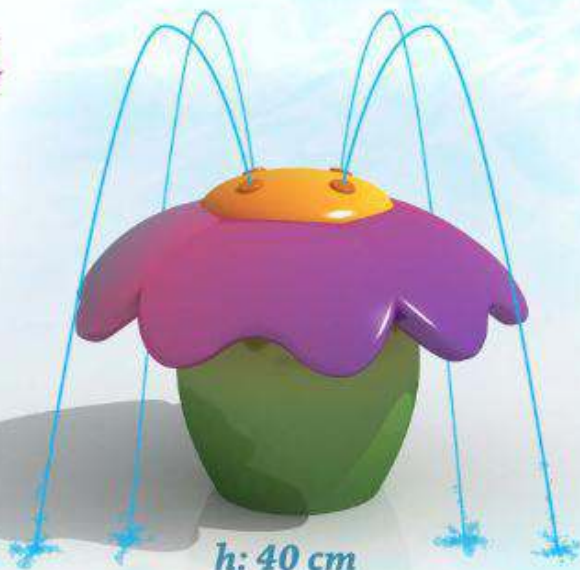
# WONDERLAND







WN01A



*h: 40 cm*

WN01B



*h: 40 cm*

WN01C



*h: 52 cm*

WN01D



*h: 36 cm*







WN02A



*h: 120 cm*



*h: 120 cm*

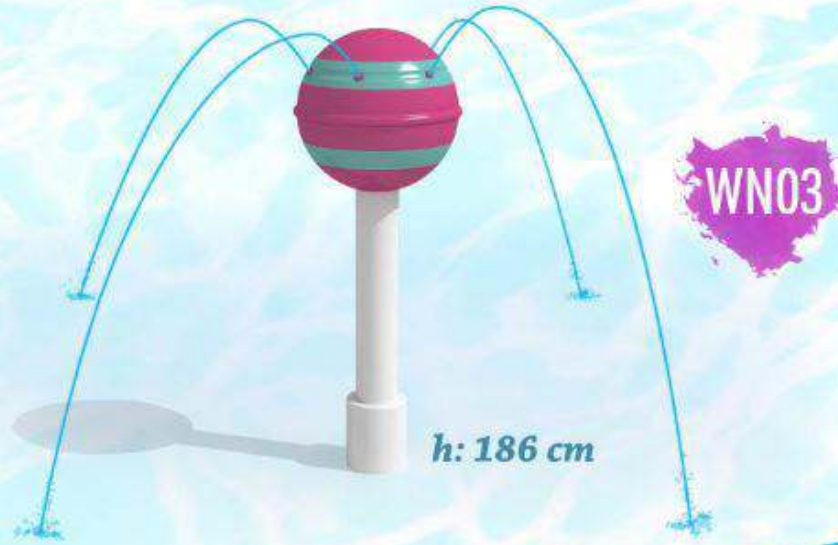
WN02B



*h: 56 cm*

WN02C









WN05A



WN05B



h: 250 cm





LND01



h: 340 cm



LND02

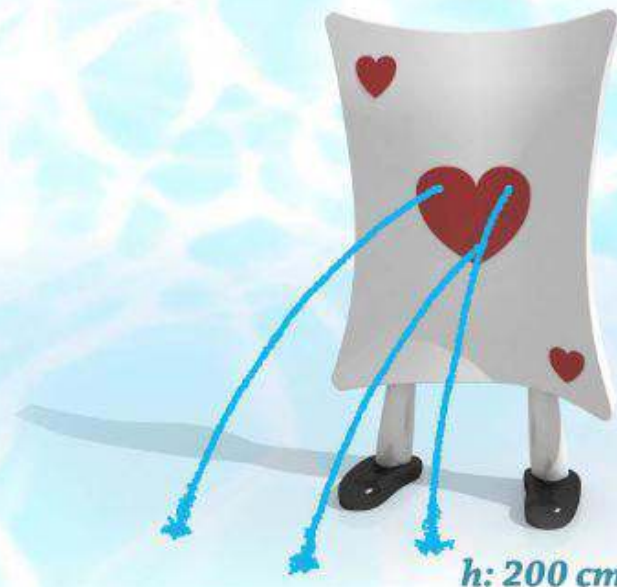
h: 250 cm

LND03



h: 250 cm

LND04



h: 200 cm

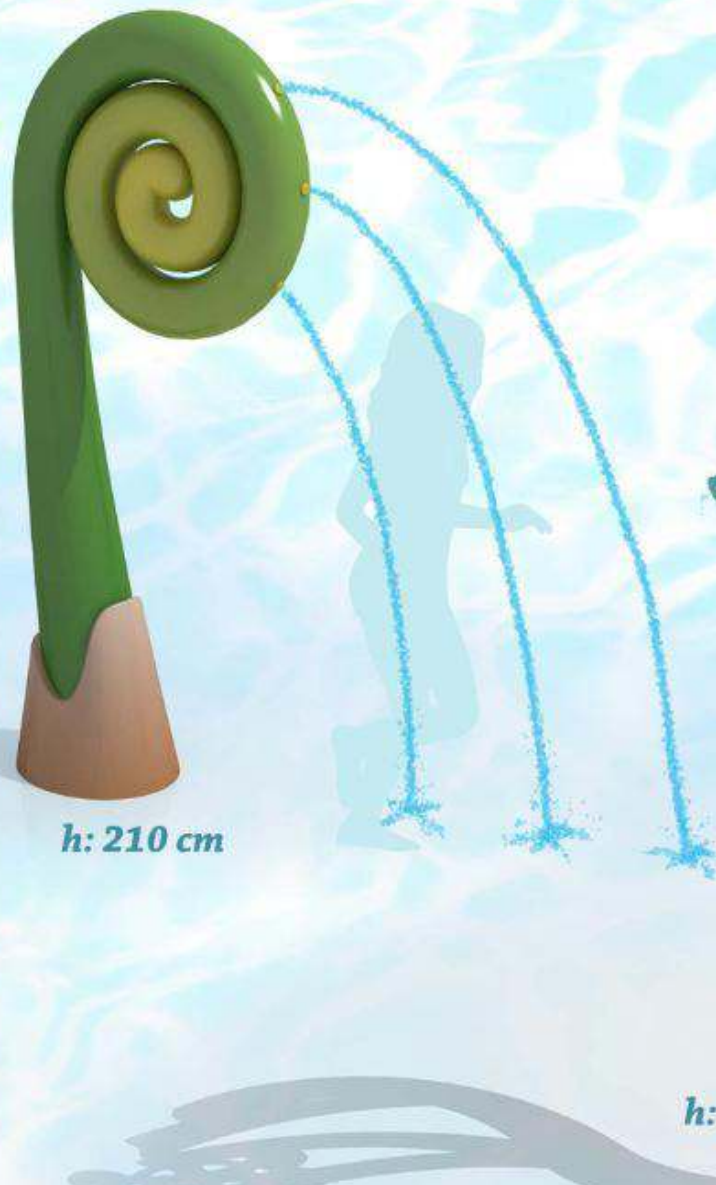




LND05



LND06



WN06







LND07A



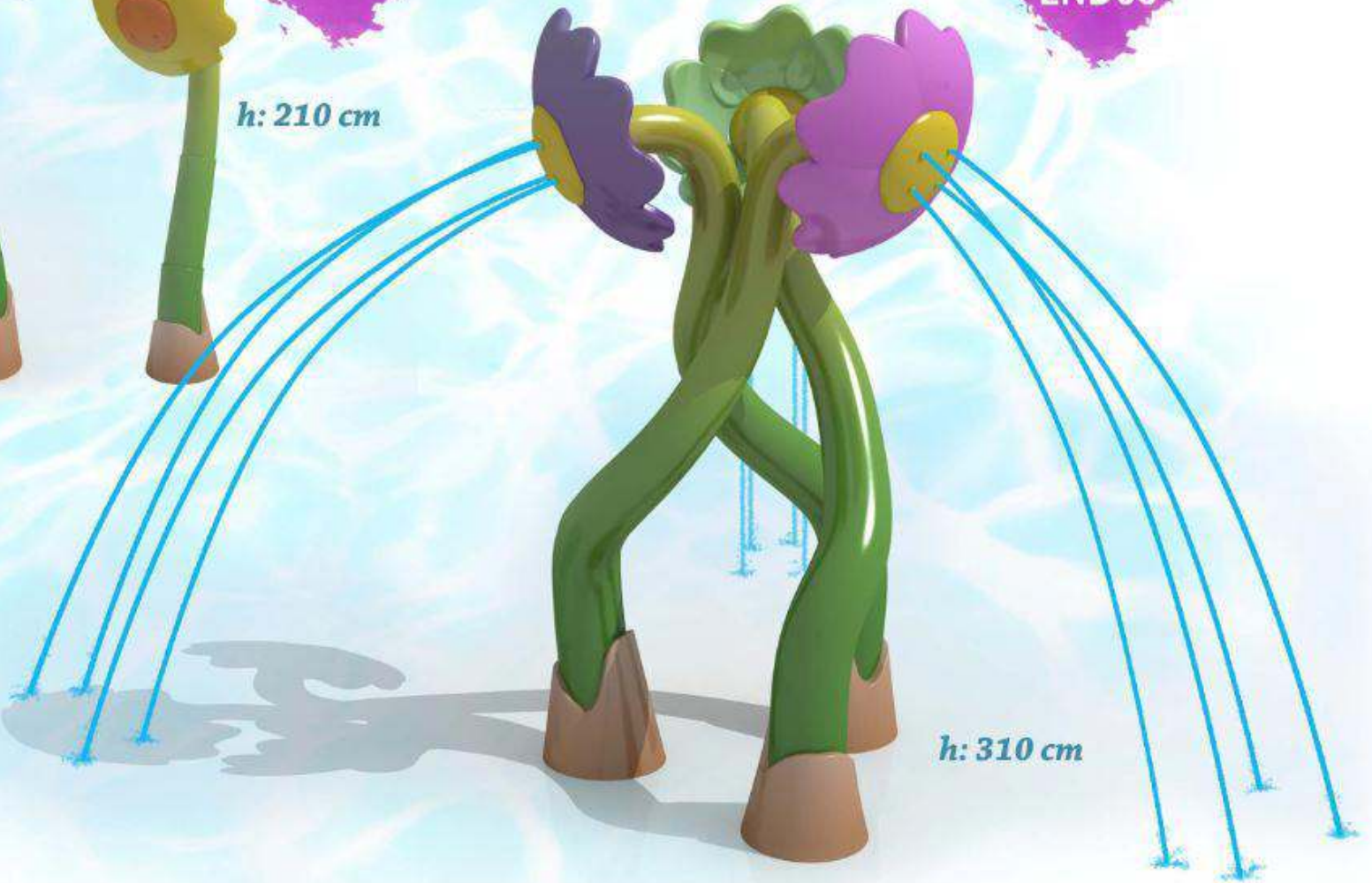
*h: 290 cm*

LND07B



*h: 210 cm*

LND08



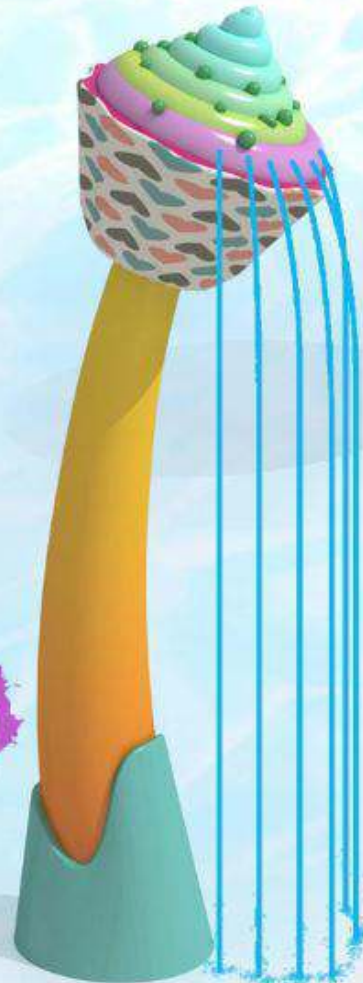
*h: 310 cm*





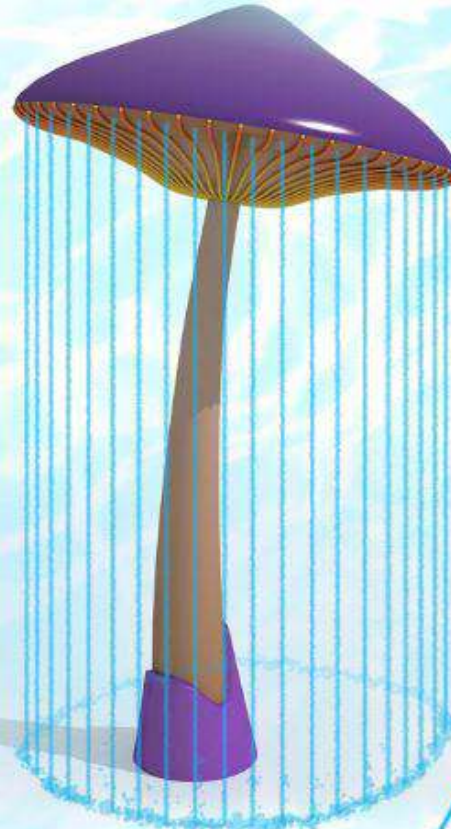
LND09

*h: 270 cm*



LND10

*h: 260 cm*



LND11

*h: 330 cm*



LND12

*h: 300 cm*





WN11A



*h: 200 cm*

WN11B



*h: 245 cm*





WN08



h: 380 cm

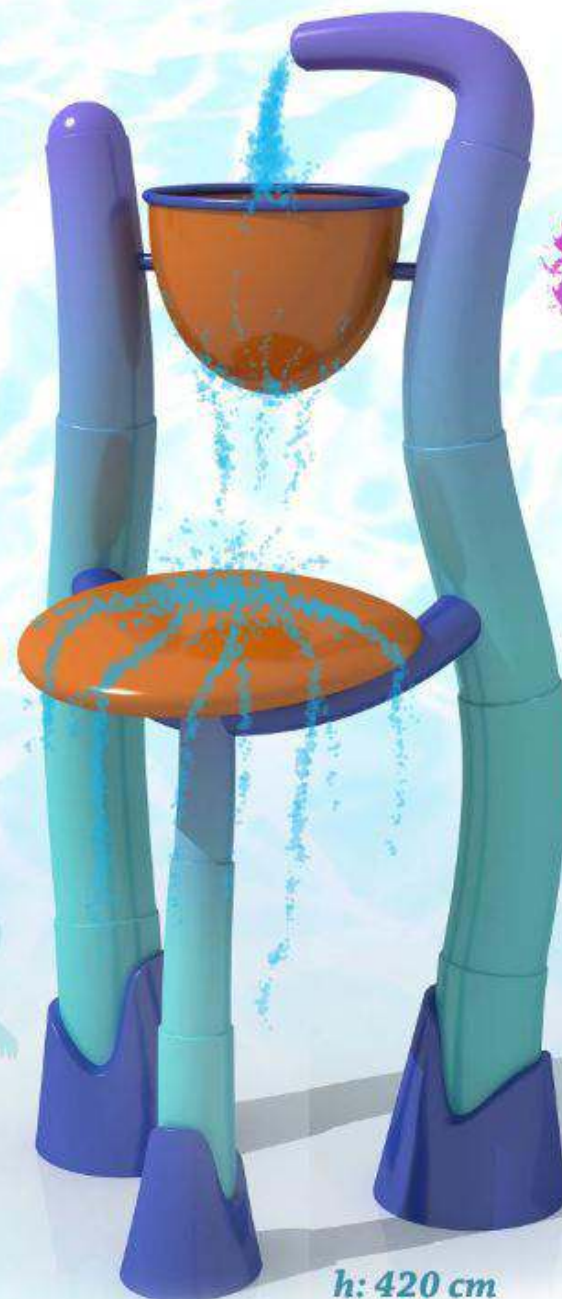
WN09





WN07A

h: 380 cm



WN07B

h: 420 cm











SprayAction  
spray park systems

# WONDERLAND



200 m<sup>2</sup>





*sprayset*





SprayAction  
spray park systems

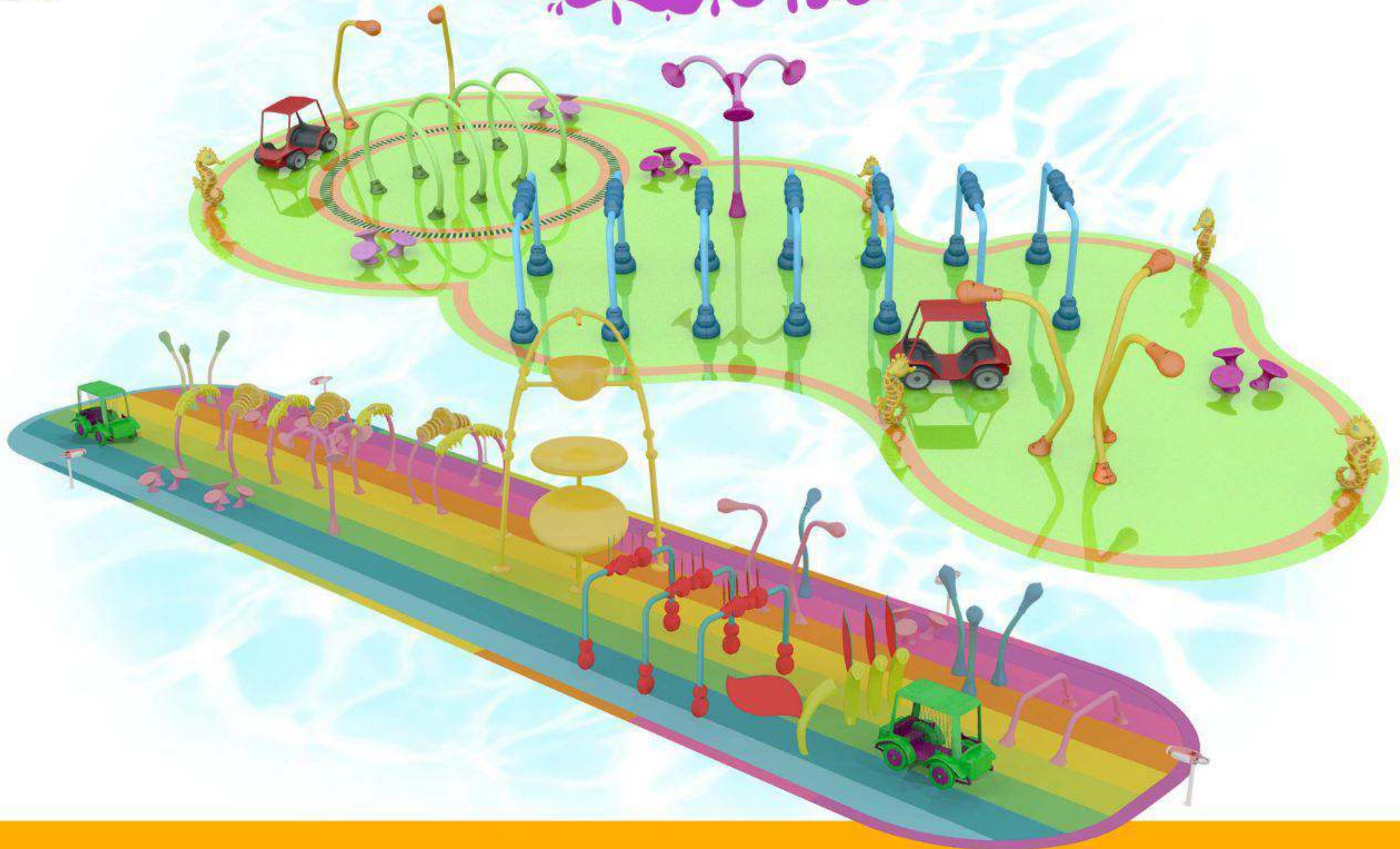
# spraysset







# spraysset







# spraysset







SprayAction  
spray park systems

# sprayset







SprayAction  
spray park systems

# spraysset

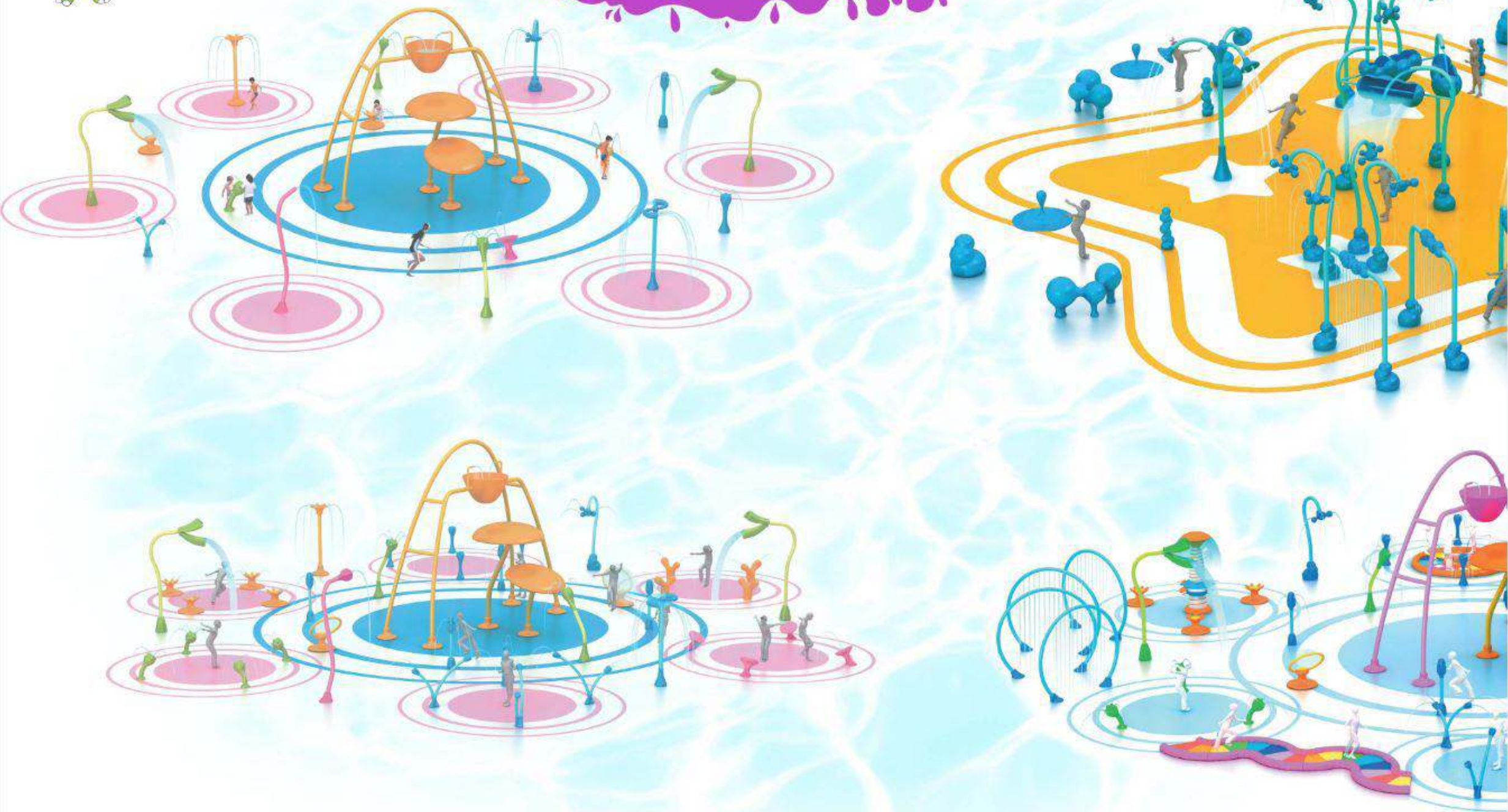






SprayAction  
spray park systems

# sprayset







SprayAction  
spray park systems

# spraysset

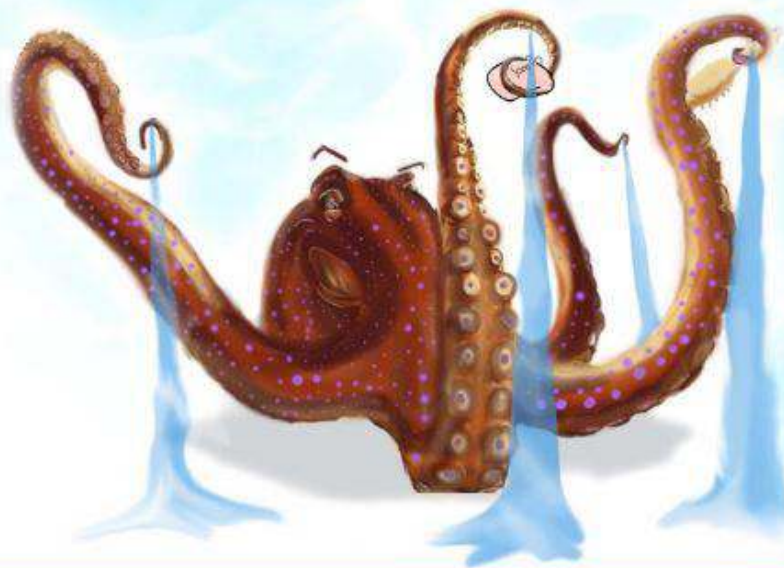






SprayAction  
spray park systems

# spraysset







SprayAction  
spray park systems

# sprayset

65







# spraysset







SprayAction  
spray park systems

# spraysset

67







# SprayAction

spray park systems

**FUTURA**<sup>®</sup>  
**FARM**  
Forming the Future

FuturaForm Composites Products & Signages  
Istasyon Mah. 1495/2 Sk. No:1 41400 Gebze - Kocaeli / Turkey

Tel : +90 (262) 656 64 72  
+90 (262) 656 64 73  
Fax : +90 (262) 656 64 76  
Mobile : +90 532 443 80 23  
+90 554 341 92 50

[www.futuraform.com.tr](http://www.futuraform.com.tr)  
[info@futuraform.com.tr](mailto:info@futuraform.com.tr)  
[www.facebook.com/futuraform](https://www.facebook.com/futuraform)  
[www.twitter.com/futuraform](https://www.twitter.com/futuraform)  
[www.pinterest.com/futuraform](https://www.pinterest.com/futuraform)  
[blog.futuraform.com.tr](http://blog.futuraform.com.tr)  
[polin@futuraform.com.tr](mailto:polin@futuraform.com.tr)

